



***HUNT GROUP***

INTERNATIONAL ARMS & SECURITY

# **MH-PX PUMP ACTION SERIES**

## **INSTRUCTION MANUAL**

READ THE INSTRUCTIONS AND  
WARNINGS IN THIS MANUAL  
CAREFULLY BEFORE USING THIS  
FIREARM

## QUALITY CONTROL - WARRANTY CARD

Serial No. of weapon \_\_\_\_\_ Model \_\_\_\_\_

Manufacturer \_\_\_\_\_

Caliber \_\_\_\_\_ Year of manufacture \_\_\_\_\_ Barrel Length \_\_\_\_\_

Number of Cartridges and grams of cartridges tested \_\_\_\_\_

Chamber details \_\_\_\_\_

PURCHASER \_\_\_\_\_

Address \_\_\_\_\_

Purchase date \_\_\_\_\_

Signature \_\_\_\_\_

PLEASE SIGN AND RETURN THIS CARD TO VALIDATE WARRANTY



**HUNT GROUP**

**INTERNATIONAL ARMS & SECURITY**

**MH-PX PUMP ACTION  
SERIES**

**INSTRUCTION MANUAL**

## **GUN SAFETY RULES**

Observe these rules of safe gun handling.

1. Always keep the muzzle pointed in a safe direction. Watch the muzzle at all time, never point a gun accidentally or intentionally, at any person or anything you do not intend to shoot. Identify the target before shooting; do not shoot at sounds.
2. Always treat a gun as if it is loaded - it may be!
3. Keep your finger off the trigger while operating the action and at all other times until you are ready to shoot.
4. Keep the safety "on" or in the "safe" position at all times until you are ready to fire. Do not rely on your gun's safety, the safety on any gun is a mechanical device and is not intended as a substitute for common sense or safe gun handling.
5. Learn how your gun functions and handles. If you do not thoroughly understand the proper use and care of your gun, seek the advice of someone who is knowledgeable.
6. Do not alter or modify any part of the firearm.
7. Store guns unloaded, separate from any ammunition, and out of the reach of children.
8. Be sure the barrel is clear of any obstructions before loading. Make it a habit to check the barrel every time before loading.
9. Be sure you have and use the proper ammunition.
10. Wear protective eye protection glasses and adequate ear protection when shooting.
11. Never climb or jump over anything, such as a tree, fence, or ditch, with a loaded gun. Remove the shells and hand the gun to someone else or place it on the ground on the other side of the obstacle before crossing it yourself. Do not lean a gun against a tree or other object; it could fall and possibly discharge.
12. Do not shoot at a hard surface or at the water. Bullet and shot can ricochet or bounce off and travel in unpredictable directions with great velocity.
13. Never transport a loaded gun. Do not place a loaded gun into a vehicle. The gun should be unloaded and placed into a case when not in use.
14. Never drink alcoholic beverages before or during shooting.

## **MAINTENANCE AND CLEANING**

**Caution:** Make sure the gun is **UNLOADED**.

1. Your MH-PX shotgun is a precision instrument and will provide a lifetime of faithful service if it is properly cleaned and maintained. It is recommended that you clean your MH-PX after every shooting session or more frequently if needed. Be sure to unload your MH-PX before servicing or cleaning.
2. Run an oil patch through the bore with a cleaning rod starting from the breech end to prevent leading, use a cleaning solvent and brass brush to clean the bore periodically. Follow this cleaning with one or two clean oil patches. Important: If your gun is equipped with choke tubes, do not use a brass brush to clean the barrels without having a choke tube installed. Barrels that utilize choke tubes must also have the choke tubes removed to clean and oil the threads inside the barrel and the choke tubes themselves. This will protect the threads and prevent dirt buildup that can cause tubes to become difficult to remove.

## **INTRODUCTION TO HUNT GROUP ARMS**

Hunt group arms is a leading company producing shotguns in Turkey since 1992.

Currently the company is exporting its products to more than 20 countries and we are marketing the guns across the globe.

Hunt group company is an integrated structure capable of producing high quality products with the latest technologies. We at HUNT GROUP ARMS thank you for the privilege of delivering a product to you that will provide you with years of pleasurable use.

## ABOUT YOUR PUMP SHOTGUN

This shotgun is manually operated. It's a pump-action shotgun with different magazines capacities like 2+1, 5+1 to a maximum of 10+1. It also has different barrel options and various colour options. It also has multiple stock options.

When you are ready to fire move the safety pin towards the red point push the forend to the back and then also pull towards the front side. Now your gun is loaded and is ready to fire.

## SAFETY SWITCH OR BUTTON

This safety mechanism is designed to stop the trigger mechanism. **DON'T RELY ON YOUR GUN'S SAFETY, TREAT EVERY GUN AS IF IT WAS LOADED AND READY TO FIRE.** The safety on any gun is a mechanical device, and it is not intended as a substitute for common sense or safe gun handling. Always keep the muzzle pointed in a safe direction.

A- The safety is located above the trigger, and provides protection against accidental or unintentional discharge under normal usage when properly used.

B- To engage the safety, push the button to the right so that it points towards the white mark, trigger is lock in this position and you are safe. When you move the safety pin towards red mark which is parallel to the trigger it means the gun is ready to fire. The safety pin should always be in the "White point" until you intend to fire the gun.

**DANGER:** The gun will fire when the trigger is pulled intentionally or accidentally when the **RED BAND MARKING IS SHOWING.**

## SAFETY INSTRUCTIONS



White dot is a safety point. Means gun is lock at white.



At red dot safety is open. Ready to fire.

## LOADING YOUR SHOTGUN



Press the cartridges into the magazine.



First, insert the magazine from the front side.



After inserting from the front, now press from the back side of the magazine. Be sure you fixed the magazine completely.

## UNLOADING YOUR SHOTGUN



To pull back the bolt and to load the gun you just need to press the unlatching button which is on the right side of the trigger guard.



By pressing the unlatching button you can pull back the foregrip till end.



Leave the unlatching button and move forward the foregrip.



Press the magazine latch to the front side to take off the magazine and pull back the foregrip to take off the cartridge which is in the chamber.





Open the screw cape from the front side of forend.



Take out the foregrip, barrel and the bolt group at the same time.



Disassembled from of gun.



Press the cartridges into the magazine.



First, insert the magazine from the front side.



After inserting from the front, now press from the back side of the magazine. Be sure you fixed the magazine completely.



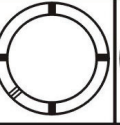
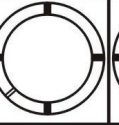



After inserting from the front, now press from the back side of the magazine. Be sure you fixed the magazine completely.

## STORAGE

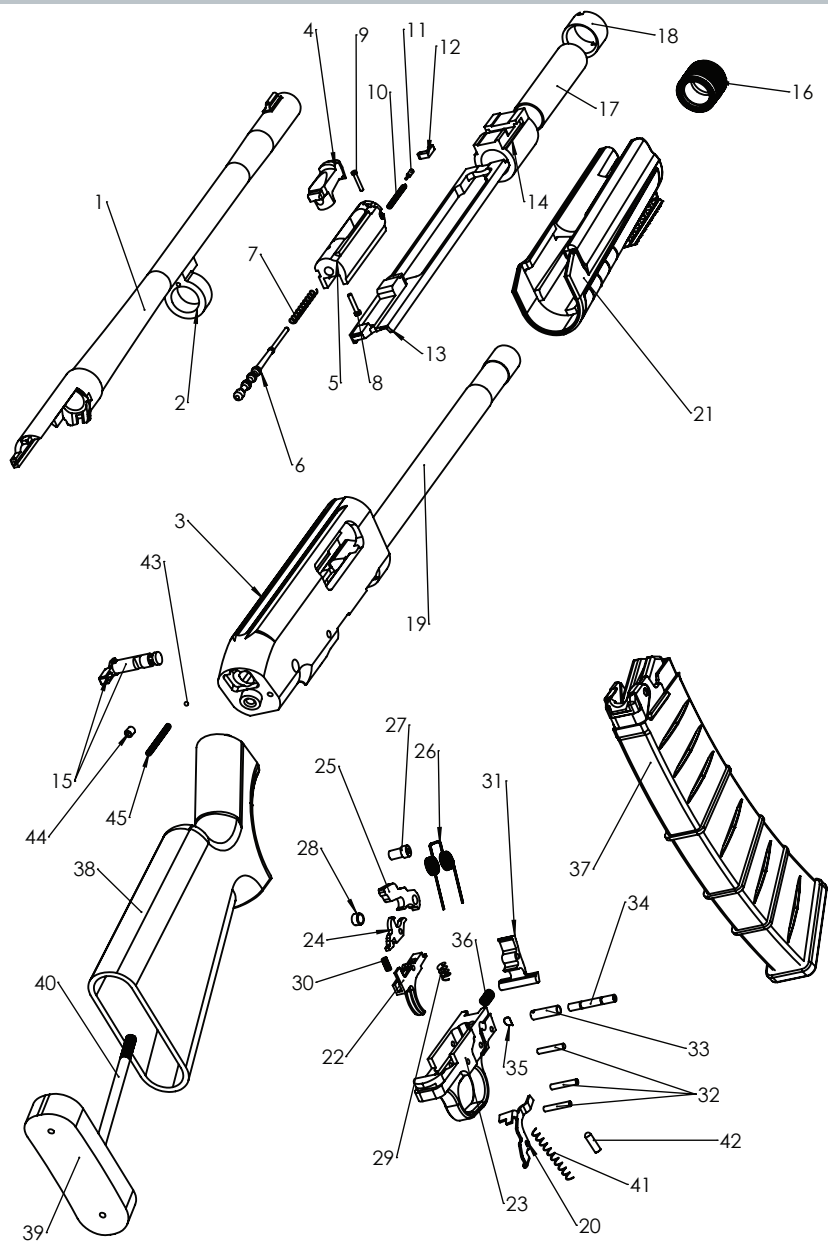
The choke controls how open or tight the pattern of the shot will be. The chart below lists the chokes available (from open to tight), and the corresponding marks that indicate the specific choke.

## USAGE OF CHOKE TUBES

	SKEET	IC	M	IM	F
CHOKE TUBE					
BBLS	CL	★★★★	★★★	★★	★

**Skeet** – Just slightly tighter than cylinder bore, skeet choke tubes are made to get a quick spread on shot while providing slightly more range. Ideal for the close shots common on a skeet range or when shooting other clays. Can also be good for hunting quail flushing from underfoot. The ideal range for this choke constriction is 15 to 25 yards. **Improved Cylinder** – The ideal range for improved cylinder choke tubes is 20 to 30 yards. **Modified** – Sitting at the middle of the pack, modified choke tubes are a good general choke size to use when not sure whether shots will be close or far. Their ideal

pattern is found at 30 to 40 yards. **Improved Modified** – Not always commonly found as part of the basic choke tubes offered with today's production shotguns, IM chokes offer little performance difference over Modified and Full but can offer a sweet spot of pattern density out between 45 to 55 yards. **Full** – For delivering maximum patterns at distance, go with the full choke, which depending on the load, can deliver an ideal range between 55 to 65 yards. While these ranges can be general suggestions depending on the size and even brand of shot you using. Remember, you owe it to the game you hunt to make sure you no matter what load and choke combination you select, that it will deliver dense patterns without ragged holes or gaps and know how far out that pattern will hold up with sufficient energy to take down game. Never fire your gun or run cleaning tools through a barrel that uses a choke tube without having a choke installed. The threads of the choke tube and the internal threads of the barrel should be cleaned after each use and before installation of the tube. Your HUNT GROUP ARMS shotgun uses choke tubes. To install a tube, insert the tube into the top of the barrel and tighten with your fingers. Once the tube is finger tightened, tighten the rest of the way with the appropriate choke tube wrench until the tube is snug. **DO NOT** over tighten or forcefully tighten with the wrench.



1 - BARREL	16 - GUIDE TUBE CAP	31 - MAGAZINE LOCK
2 - BARREL RING	17 - FOREARM TUBE	32 - TRIGGER - HAMMER- MAG LOCK PIN
3 - RECEIVER	18 - NUT,FOREARM TUBE	33 - TUBE TRIGGER FRAME
4 - LOCKING BLOCK	19 - GUIDE TUBE	34 - PIN TRIGGRE FRAME
5 - BOLT BODY	20 - SLIDE LOCK LEVER	35 - D RING TRIGGER FRAME PIN
6 - FRING PIN	21 - FOREND	36 - MAGAZINE LOCK SPRING
7 - SPRING, FIRING PIN	22 - TRIGGER	37 - MAGAZINE
8 - PIN, FIRING PIN RETAINING	23 - TRIGGER GUARD	38 - STOCK
9 - EXTRACTOR, PIN	24 - SEAR	39 - RECOIL PAD
10 - SPRING,EXTRACTOR	25 - HAMMER	40 - BOLT, STOCK
11 - PLUNGER EXTRACTOR	26 - HAMMER SPRING	41 - SLIDE LOCK LEVER SPRING
12 - EXTRACTOR	27 - HAMMER FIXING KIT-1	42 - CAP,SLIDE LOCK LEVER
13 - SLIDE ARM	28 - HAMMER FIXING KIT-2	43 - SELECTOR DETENT
14 - ACTION ARM SLEEVE	29 - TRIGGER SPRING	44 - SAFETY SCREW
15 - SAFETY	30 - SPRING SEAR	45 - SAFETY SPRING



**HUNT GROUP**  
INTERNATIONAL ARMS & SECURITY



## BE COURTEOUS

When shooting or hunting always acquire the permission of the landowner. Respect the land. Do not litter, use gates when possible, leave open and closed gates closed. Drive vehicles only where advance permission has been granted and always express gratitude for use of another person's land. Offer your labour or game as repayment for the privilege of use. Remember you are helping develop a reputation for all sportsmen/sportswomen.

HUNT GROUP SİLAH OTOM. SAN. ve TİC. LTD. ŞTİ.  
Müftü Mahallesi 41117. Sokak A Blok No : 2B - Beyşehir - KONYA / TURKEY  
Web : [www.huntgrouparms.com](http://www.huntgrouparms.com)  
E-mail : [export@huntgrouparms.com](mailto:export@huntgrouparms.com)